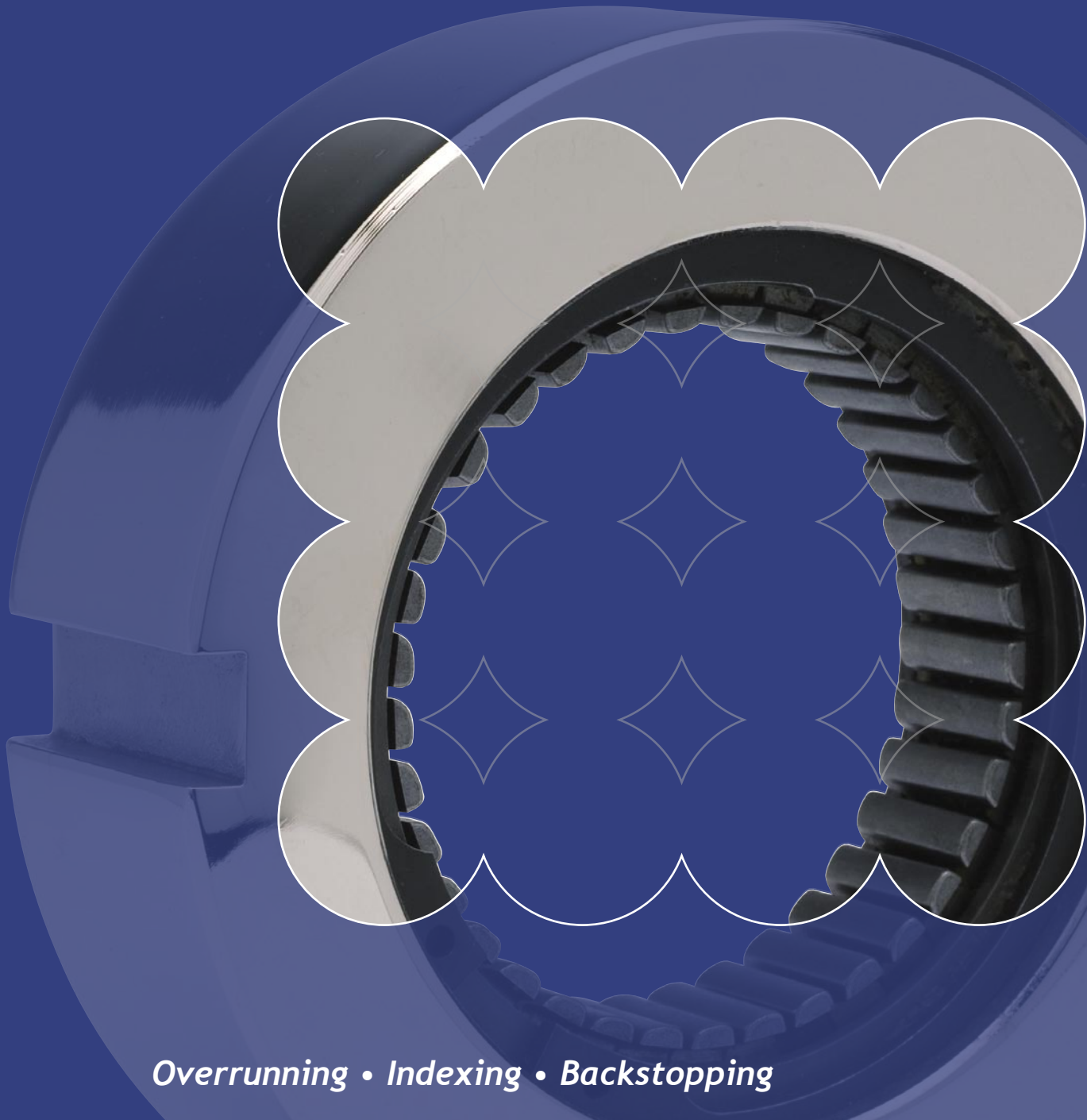


Freewheels

Sprag and Trapped Roller Clutches



Overrunning • Indexing • Backstopping

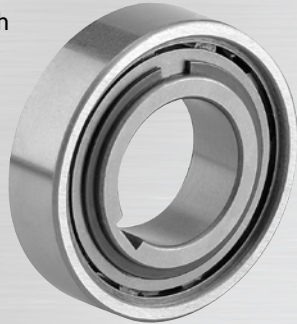
RENOLD
Superior Freewheel Technology

www.renold.com

Trapped Roller Freewheels

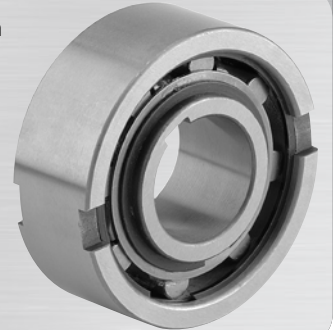
REUS

A roller type freewheel which is non bearing supported. Available from size 8 to 60.



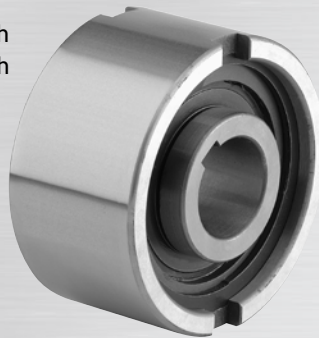
REUSNU

A roller type freewheel which is non bearing supported. These freewheels have the same dimensions as the 63 series ball bearing. Available from size 8 to 60.



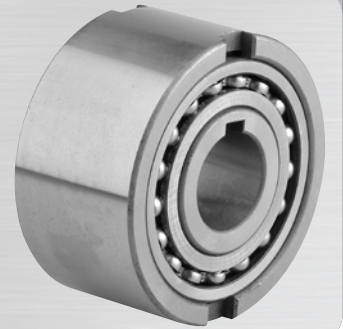
REUF

A roller type freewheel which is non bearing supported with external keyways. Similar to the REUSNU but wider.



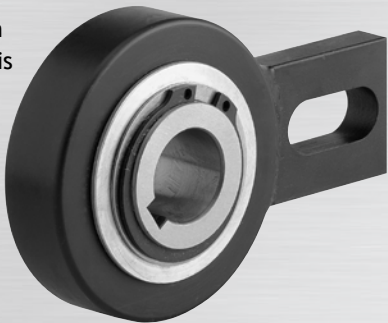
REGF

REGF freewheels are self centring. Sizes 8 to 20 centring is steel on steel. Sizes 25 to 130 are centred by 2.160 series bearings. Available from size 8 to 130.



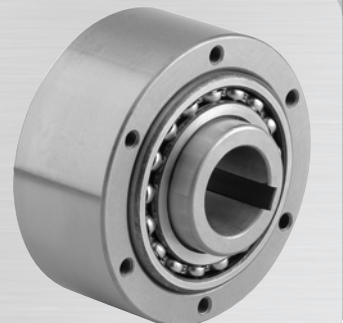
REGV

Concentricity between inner and outer races is carried out by means of bushes. Products are supplied with torque arm. Available from size 20 to 120.



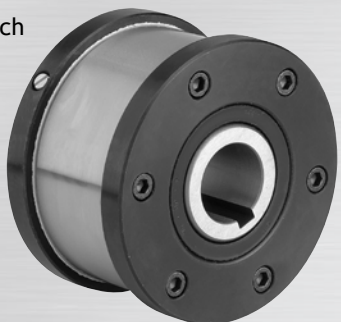
REGL

These freewheels have 160 series ball bearings that are used to centre the inner race with the outer race. Available from size 12 to size 150.



REGLP

Roller type freewheels which form part of a modular system (using the REGL). Available from size 12 to 150.



REUK/REUKC and REUKCC

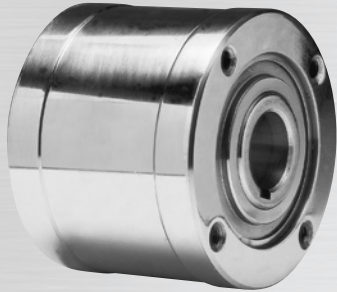
Combined ball-bearing and freewheel.



Sprag Clutch Freewheels

SO/SX/SO-L

Freewheels available in three variations: **SO**, for overrunning applications. **SX**, for indexing applications. **SO-L**, grease filled with labyrinth seal. Available from size 300 to 1027.



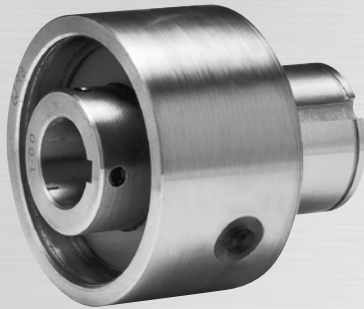
SO/SX/SO-L

STUB SHAFT ADAPTOR. The same as the SO/SX/SO-L freewheels. These freewheel clutches are made available with fitted stub shaft adaptors. Available from size 300 to 1027.



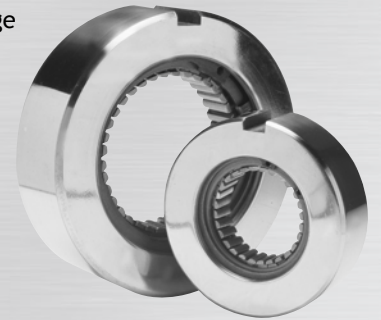
SB

A light duty freewheel clutch. Allows direct mounting with chain pinions, gears etc. Available from size 3 to 16.



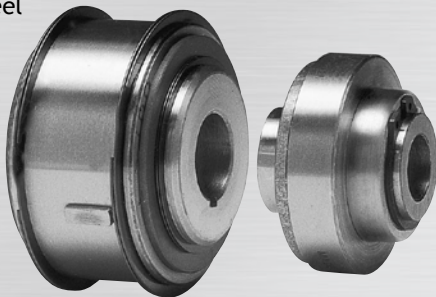
DM

Available in a wide range of sizes. These include sizes 125 to size 513.



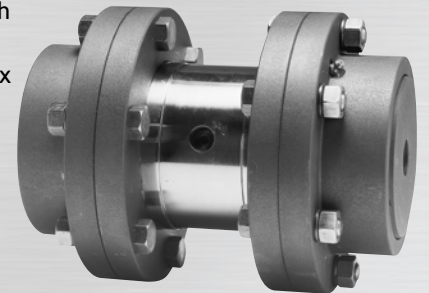
SA

Light duty freewheel clutches. Available from size 02 to size 05.



SCGF

Denotes sprag clutch freewheels fitted with Renold Gearflex couplings. Available in all freewheel sizes.



SCPF

Denotes sprag clutch freewheels fitted with Renold Pinflex couplings. Available in all freewheel sizes.



REGP cage assembly

The REGP series is a cage comprising sprag elements running as a freewheel on races primarily measured in inches.



Freewheels Interchange Tables

TRAPPED ROLLER FREEWHEELS

Renold	Formsprag Steiber	Marland	Morse Emerson Tsubaki	Ringspann	GMN
REGL	GFP/AL*	N/A	MZEU	FGR	GL
REGLP	GFRN/ALP*	N/A	MZEU K	FGRN	GLP
REGV	AV/RSBW*	N/A		FAV/FAB*	GW/RSBW
REGF	NFR/ANG	N/A		FNR	GF
REUF	NF/AE	N/A		FN	UF
REUSNU	NFS/ASNU	N/A	NFS	FSN	USNU
REUS	NSS/AS	AS	NSS	FCN/R	NSS/AS/US
REUK	CSK/KK	CSK	KK	ZZ	K
REUKC	CSKP	N/A	KK 1K	ZZP/FCN-K	KP
REUKCC	CSKPP	N/A	KK 2K	ZZPP	KPP
REUK 2RS	CSK 2RS	N/A	KK 2DG	ZZ 2RS	N/A
REGP	DC	N/A		BWX	DC

* AL, ALP, FAB, RSBW. For these variants please refer to Renold.

REGL units can be fitted with either new flanges/covers or existing flanges/covers from any interchangeable competitors unit listed above.

SPRAG CLUTCH FREEWHEELS

Renold	Formsprag Steiber	Marland	Morse Emerson Tsubaki	Ringspann	Dodge
DM 200	FS 20	R 200	B-200A	RC 200	N/A
DM 500	FS 50	N/A	B-500A	N/A	N/A
DMD	N/A	N/A	N/A	RCD	TXT

RENOLD LARGE HOLDBACKS

Renold	Formsprag Steiber	Marland	Morse Emerson	Tsubaki	Ringspann	Falk	Stephens Adamson
SH	LLH	MA	CB	BS	FRH	NRT	HD

RENOLD SA SERIES

Renold	Formsprag Steiber		Marland			Morse Emerson Tsubaki			Ringspann				
	Max bore In mm	Max torque lb ft Nm	Max bore (In)	Max torque lb ft		Max bore (In)	Max torque lb ft		Max bore (In)	Max torque lb ft			
SA 02	0.250 6	4.5 6	FS 02	0.250	4.5	N/A	N/A	N/A	N/A	N/A	N/A	N/A	N/A
SA04	0.375 10	17 23	FS 04	0.375	17	N/A	N/A	N/A	N/A	N/A	N/A	N/A	N/A
SA05	0.625 16	30 41	FS 05	0.625	30	N/A	N/A	N/A	N/A	N/A	N/A	N/A	N/A
<i>SA: Overrunning/ backstopping/indexing. Grease lubrication</i>		<i>FS: Overrunning/ backstopping/indexing. Grease lubrication.</i>		N/A			N/A			N/A			

- Direct interchange - no fuss!
- Quality and excellence - a given
- Performance & reliability - count on Renold
- Sprag freewheels - zero backlash
- Customisation - all freewheels can be designed and built for your application
- Safety and peace of mind - Renold assurance
- Full technical catalogue - available on request or download pdf from www.renold.com

Freewheels Interchange Tables

RENOLD SB SERIES

Renold	Max bore torque		Formsprag Steiber	Max bore torque		Marland	Max bore torque		Morse Emerson Tsubaki	Max bore torque		Ringspann	Max bore torque	
	(In)	(lb ft)		(In)	(lb ft)		(In)	(lb ft)		(In)	(lb ft)		(In)	(lb ft)
SB 3	0.500 10	40 54	FSR 3	0.500 40	FSR 3	0.500 40	PB 3	0.500 40	N/A	N/A	N/A			
SB 5	0.625 16	85 115	FSR 5	0.625 85	FSR 5	0.625 85	PB 5	0.625 85	N/A	N/A	N/A			
SB 6	0.750 18	275 372	FSR 6	0.750 275	FSR 6	0.750 275	PB 6	0.750 275	N/A	N/A	N/A			
SB 8	1.000 25	400 542	FSR 8	1.000 400	FSR 8	1.000 400	PB 8	1.000 400	N/A	N/A	N/A			
SB10	1.250 32	650 881	FSR 10	1.250 650	FSR 10	1.250 650	PB 10	1.250 650	N/A	N/A	N/A			
SB12	1.500 38	1300 1760	FSR 12	1.500 1300	FSR 12	1.500 1300	PB 12	1.500 1300	N/A	N/A	N/A			
SB 14	1.750 45	1450 1970	FSR 14	1.750 1450	FSR 14	1.750 1450	PB 14	1.750 1450	N/A	N/A	N/A			
SB 16	2.000 50	1600 2170	FSR 16	2.000 1600	FSR 16	2.000 1600	PB 16	2.000 1600	N/A	N/A	N/A			
SB: Overrunning/backstopping/indexing. Oil or grease lubrication.			FSR: Overrunning/backstopping/indexing. Oil or grease lubrication.			FSR: Overrunning/backstopping/indexing. Oil or grease lubrication.			PB: Overrunning/backstopping/indexing. Oil or grease lubrication.			N/A		

RENOLD SO/SX SERIES

Renold	Max bore torque		Formsprag Steiber	Max bore torque		Marland	Max bore torque		Morse Emerson Tsubaki	Max bore torque		Ringspann	Max bore torque	
	(In)	(lb ft)		(In)	(lb ft)		(In)	(lb ft)		(In)	(lb ft)		(In)	(lb ft)
SO 300 SX 300	0.750 20	275 379	FSO 300 HPI 300	0.750 275	RMS 12 RMS FG 12	0.750 275	MG&MO 300 MI 300	0.750 275	FRS 300 FRSG 300	0.750	295			
SO 400 SX 400	0.875 22	300 407	FSO 400 HPI 400	0.875 300	RMS 14 RMS FG14	0.875 300	MG&MO 400 MI 400	0.875 300	FRS 400 FRSG 400	0.875	340			
SO 500 SX 500	1.312 32	1168 1585	FSO 500 HPI 500	1.312 1175	RMS 21 RMS FG 21	1.312 1175	MG&MO 500 MI 500	1.312 1175	FRS 500 FRSG 500	1.312	1312			
SO 600 SX 600	2.000 50	2285 3100	FSO 600 HPI 600	2.000 2250	RMS 32 RMS FG 32	2.000 2250	MG&MO 600 MI 600	2.000 2250	FRS 600 FRSG 600	2.000	2325			
SO 700 SX 700	2.938 70	5086 6900	FSO 700 HPI 700	2.938 5000	RMS 47 RMS FG 47	2.938 5000	MG&MO 700 MI 700	2.938 5000	FRS 700 FRSG 700	2.938	6800			
SO 750 SX 750	3.437 85	7120 9660	FSO 750 HPI 750	3.437 7000	RMS 55 RMS FG 55	3.437 7000	MG&MO 750 MI 750	3.437 7000	FRS 750 FRSG 750	3.437	10400			
SO 800 SX 800	4.437 110	13223 17940	FSO 800 HPI 800	4.437 13000	RMS 72 RMS FG 72	4.437 13000	MG&MO 800 MI 800	4.437 13000	FRS 800 FRSG 800	4.500	14500			
SO 900 SX 900	5.437 130	18000 24400	FSO 900 HPI 900	5.437 18000	RMS 87 RMS FG 87	5.437 18000	MG&MO 900 MI 900	5.437 18000	FRS 900 FRSG 900	5.437	20000			
SO 1000 SX 1000	6.437 160	24987 33900	N/A	N/A	N/A	N/A	MG&MO 1000 MI 1000	6.437 24987	FRS 1000 FRSG 1000	7.000	29400			
SO 1027 SX 1027	7.000 180	27000 36600	FSO 1027 HPI 1027	7.000 27000	RMS 112 RMS FG 112	7.000 27000	N/A	N/A	N/A	N/A	N/A			
SO: Overrunning/backstopping. SX: Indexing. Oil or grease lubrication.			FSO: Overrunning/backstopping. HPI: Indexing. Oil or grease lubrication.			RMS: Overrunning/backstopping/indexing. RMSG: Grease lubricated.			MG: Overrunning/backstopping. MO: Labyrinth seal. MI: indexing.			FRS: Overrunning/backstopping/indexing. FRSG: Grease lubricated.		

For all SO series clutches (size 300 to 1027) a standard range of Renold RTA torque arms are available.



CANADA

National Service Centre
622 rue De Hull
Ville LaSalle, QC
H8R 1V9
Tel (800) 265-9970
Fax (800) 661-6118

Western Service Centre
9210 - 60th Ave.
Edmonton, AB
T6E 0C1

Ontario Service Centre
80 Hale Road, Unit 1
Brampton, ON
L6W 3N9

CUSTOMER SERVICE AND ORDER ENTRY
Tel (toll-free) (800) 265-9970

USA

Renold Inc
100 Bourne Street
Westfield, NY 14787-9706
Tel (716) 326-3121
Fax (716) 326-8229
Email info@renold.com

CUSTOMER SERVICE AND ORDER ENTRY
Tel (toll-free) 1-800-879-2529

WEB

www.renold.com

For other country distributors please consult the Renold website.

While all reasonable care is taken in compiling the information contained in this brochure, no responsibility is accepted for printing errors.

All information contained in this brochure is subject to change after the date of publication.

RENOLD
Superior Freewheel Technology

www.renold.com